

SHARP

AL-2021

Digital Multifunctional System



A Compact Multifunctional System with Full-Colour Scanning

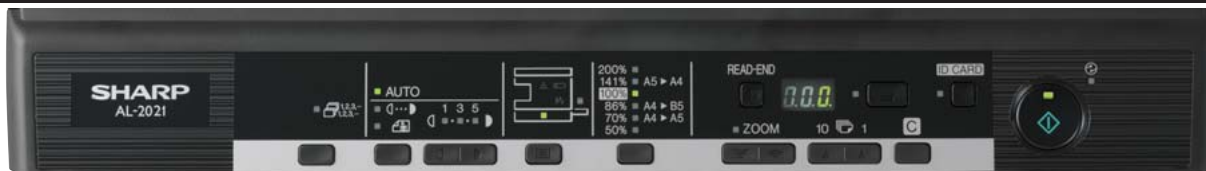


COPY

PRINT

COLOUR SCAN

SHARPEDESK



Speedy Copying and Quick First Copy Time

The AL-2021 has a quick first copy time of **8.0 seconds** to save valuable time when performing multiple short-run jobs. And with a continuous copy rate of **20 cpm**, you can do more copy jobs in less time.



SOPM and Electronic Sorting

The AL-2021's Scan Once/Print Many (SOPM) function does one scan of multiple-page documents and stores them in memory for making up to **99 copies** of each page. The Electronic Sorting function then **automatically collates** multiple sets of copies in page order without the aid of a sorter.

Fast Printing with Sharp Technology

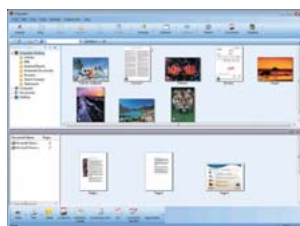
The AL-2021 is a high-performance printer incorporating Sharp Printer Language with Compression (SPLC) technology. SPLC effectively reduces the data size of print jobs, speeding up the data transfer time and printing process while improving overall throughput. Also, the **RIP Once/Print Many (ROPM)** function saves print data in the AL-2021's internal memory and transfers it to output at a quick rate of **20 ppm** in 600-dpi resolution.



Full-Colour Scanning

The AL-2021 has 600 x 600-dpi full-colour scanning capability, complete with powerful utility software. Operation is quick and easy—simply press the Scan button, select an application, and press Start. Up to six pre-registered applications are available, including Sharpdesk, e-mail, Microsoft® Word, OCR, PC-fax, and a different application of your choice. **Button Manager** allows you to change/assign these destination applications and scan settings. With support for the **TWAIN** standard, the AL-2021 lets you import scanned images to a commercially available TWAIN-compliant application.

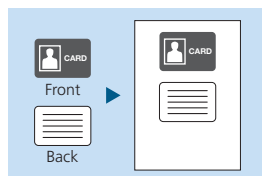
Sharpdesk 3.3 desktop document management software lets you easily organise, search, edit, and distribute your scanned documents. And **Sharpdesk Composer** combines different types of files into a single document through simple drag-and-drop operation.



Sharpdesk screen

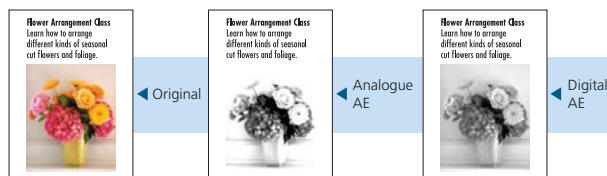
One-Touch ID Card Copy

The AL-2021 has a dedicated key for easy copying of both sides of a card (ID cards, credit cards, etc.) onto a single page.



Superb Image Quality

600-dpi resolution and 256-level greyscale ensure finely detailed reproduction, while **Digital Auto Exposure Control** provides optimum copy contrast. For the best results, users can select **Text mode** for text-only originals or **Photo mode** that gives detailed, high-quality reproduction of photos and delicate halftone images.



Other Key Features

- Wide zoom range from 25% to 400% with 5 preset ratios
- 250-sheet paper tray + 50-sheet multi-bypass feeder
- Cost-efficient Toner Save mode
- Pre-Heat/Auto Power Shut-Off modes
- Space-saving wingless design

Specifications (tentative)

GENERAL	
Type	Desktop
Paper size	Max. A4 (8 1/2" x 14"), min. A6 (5 1/2" x 8 1/2")
Paper capacity	300 sheets (250 + 50)
First copy time*1	8.0 seconds
Warm-up time	— (Auto Start mode)*2
Memory	32MB
Power requirements	Rated local AC voltage ±10%, 50/60 Hz
Power consumption (max.)	1.0 kW
Dimensions (W x D x H)	518 x 445 x 298 mm (20 1/2" x 17 5/8" x 11 3/4")
Weight (approx.)*3	15.9 kg (35.1 lbs)
COPIER	
Copy speed	Max. 20 cpm (A4, 8 1/2" x 11")
Original size	Max. A4 (8 1/2" x 14")
Continuous copy	99
Resolution	Scan: 600 x 600 dpi (Photo mode) 600 x 300 dpi*4 (AE/Text mode) Print: 600 x 600 dpi
Gradation	256 levels
Zoom range	25% to 400% in 1% increments
Preset copy ratios	5 ratios (3 reduction + 2 enlargement)
PRINTER	
Print speed	Max. 20 ppm (A4, 8 1/2" x 11")
Resolution	600 dpi
Interface	USB 2.0
Supported OS	Windows® 2000, Windows® XP, Windows Vista®, Windows® 7
PDL (emulation)	SPLC (Sharp Printer Language with Compression)
COLOUR SCANNER	
Scan method	Push scan (via control panel), pull scan (TWAIN compliant application)
Resolution	600 x 600 dpi (setting range: 50 to 9,600 dpi)
Protocols	TWAIN, WIA (Windows® XP, Windows Vista®, Windows® 7), STI
Interface	USB 2.0
Supported OS	Windows® 2000, Windows® XP, Windows Vista®, Windows® 7
Scanner utilities	Button Manager, Sharpdesk 3.3, Composer

*1: When feeding A4 (8 1/2" x 11") sheets from paper tray. May vary depending on operating conditions and environment.

*2: Auto Start mode allows the user to go to reserved copy by pushing the start key while the machine is turning on after being off or in energy-saving mode. Copying starts automatically once the machine has turned on.

*3: Not including toner/developer.

*4: Can be changed to 600 x 600 dpi via user setting.

• Design and specifications are subject to change without prior notice.

• Windows and Windows Vista are either registered trademarks or trademarks of Microsoft Corporation in the United States and/or other countries.

• All other brand names and product names may be trademarks or registered trademarks of their respective owners.

• The ENERGY STAR logo is a certification mark and may only be used to certify products that have been determined to meet the ENERGY STAR programme requirements. ENERGY STAR is a US registered mark. The ENERGY STAR guidelines apply to products only in the US, the EU, Japan, Canada, Australia, New Zealand, and Taiwan.